

OLYMPIAN PLUS PLUG-IN SYSTEM

Pressure relief valves

V64H, V68H - G1/4 ... G1 1/2



V64H



V68H

Olympian relief valves protect compressed air systems from over-pressurisation

High relief capacity, sensitive and accurate

Threaded relief port for silencer or piped exhaust

Norgren pressure relief valves comply with category O(S.E.P.) and category 1 of the Pressure Equipment Directive 97/23/EC

TECHNICAL DATA

Medium:

Compressed air only

Gauge ports:

Rc1/8

Relief port:

G1/2 (V64H), G1 (V68H)

Ambient temperature:

-20°C ... +80°C

Consult our Technical Service for use below +2°C

Relief pressure adjustment

range:

0,3 ... 17 bar

MATERIALS

V64H

Body, bonnet & yoke: zinc alloy

Bottom plug: aluminium

Adjusting screw: steel

Elastomers: synthetic rubber

V68H

Body, intermediate body, bonnet,

bottom plug & yoke: aluminium

Adjusting screw: steel

Elastomers: synthetic rubber

V64H

Port size	kg	MODELS	ACCESSORIES					SERVICE KIT	
			Wall mounting bracket	Tamper resistant kit	Gauge 0 ... 10 bar	Silencer	3/2 Shut-off valve*		Silencer (shut-off valve)
G1/4	1,68	V64H-2GD-RMN	74504-50	1581-90	18-013-013	MB004B	T64T-2GB-P1N	T40B1800	V64H-KIT
G3/8	1,66	V64H-3GD-RMN	74504-50	1581-90	18-013-013	MB004B	T64T-3GB-P1N	T40B1800	V64H-KIT
G1/2	1,63	V64H-4GD-RMN	74504-50	1581-90	18-013-013	MB004B	T64T-4GB-P1N	T40B1800	V64H-KIT
G3/4	1,99	V64H-6GD-RMN	74504-50	1581-90	18-013-013	MB004B	T64T-6GB-P1N	T40B1800	V64H-KIT

* Threaded exhaust port

V68H

Port size	kg	MODELS	ACCESSORIES					SERVICE KIT	
			Wall mounting bracket	Tamper resistant kit	Gauge 0 ... 10 bar	Silencer	3/2 Shut-off valve*		Silencer (shut-off valve)
G3/4	2,21	V68H-6GD-RMN	18-001-979	1581-90	18-013-013	MB008B	T68H-6GB-B2N	T40B2800	V68H-KIT
G1	2,20	V68H-8GD-RMN	18-001-979	1581-90	18-013-013	MB008B	T68H-8GB-B2N	T40B2800	V68H-KIT
G1 1/4	2,22	V68H-AGD-RMN	18-001-979	1581-90	18-013-013	MB008B	T68H-AGB-B2N	T40B2800	V68H-KIT
G1 1/2	2,26	V68H-BGD-RMN		1581-90	18-013-013	MB008B	T68H-BGB-B2N	T40B2800	V68H-KIT

* Threaded exhaust port

For further information



www.norgren.com/info/en6-086

OPTIONS SELECTOR

Port Size	Substitute
1/4"	2
3/8"	3
1/2"	4
3/4"	6

Threads	Substitute
PTF	A
ISO Rc taper	B
ISO G parallel	G

V64H-★★D-R★★

Gauge	Substitute
With	G
Without	N

Outlet pressure adjustment range*	Substitute
0,3 ... 4 bar	F
1 ... 10 bar	M
0,7 ... 17 bar	S

*Relief valve can be adjusted to pressures in excess of, and less than, those specified. Do not use these units to control pressures outside of the specified ranges.

Port Size	Substitute
3/4"	6
1"	8
1 1/4"	A
1 1/2"	B

Threads	Substitute
PTF	A
ISO Rc taper	B
ISO G parallel	G

V68H-★★D-R★★

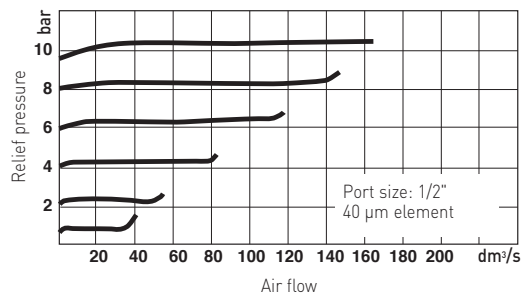
Gauge	Substitute
With	G
Without	N

Outlet pressure adjustment range*	Substitute
0,3 ... 4 bar	F
1 ... 10 bar	M
0,7 ... 17 bar	S

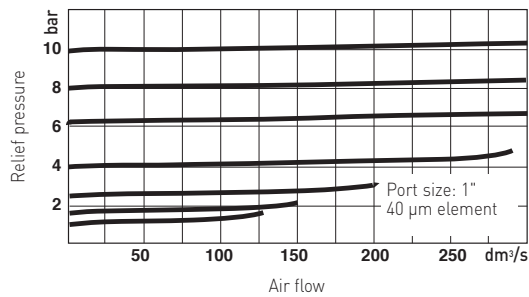
*Relief valve can be adjusted to pressures in excess of, and less than, those specified. Do not use these units to control pressures outside of the specified ranges.

FLOW CHARACTERISTICS

V64H

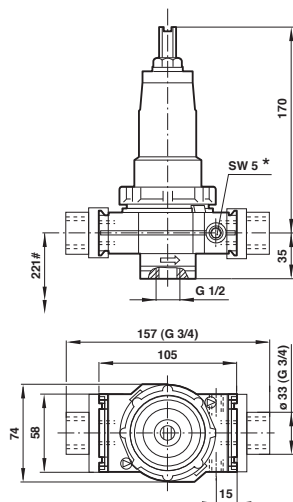


V68H

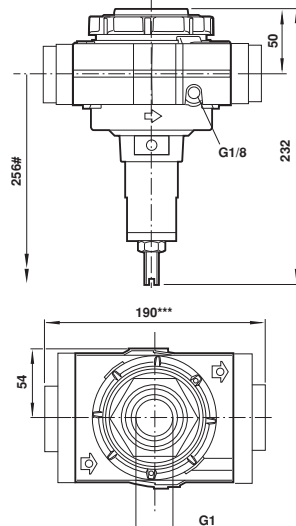


DIMENSIONS

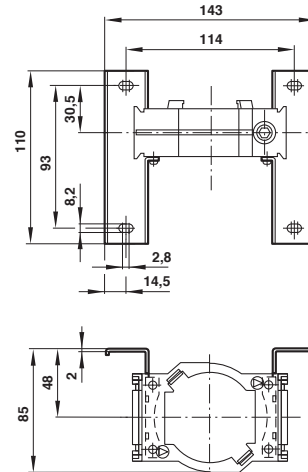
V64H



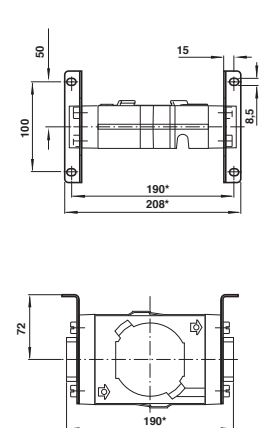
V68H



Bracket mounting (V64H)



Bracket mounting (V68H)



* Gauge port Rc1/8

Minimum clearance required to remove unit from yoke

Minimum clearance required to remove unit from yoke

*** For 1 1/4" and 1 1/2" ported yokes add 10 mm