

QUICK EXHAUST VALVES T70, S/511, S/513, S/514 Series

1/8 to 1/2" BSP



Enables air to be exhausted quickly from air reservoirs and cylinders

Allows higher cylinder speeds to be achieved

Simple, compact design and construction

Very reliable in operation

TECHNICAL DATA

Medium:
Compressed air, filtered, lubricated or nonlubricated, vacuum

Operating pressure:
0,5 ... 10 bar (T70)
0,7 ... 10 bar (S/511)
0,7 ... 7 bar (S/513, S/514)

Ambient temperature:
-20°C to +80°C
Consult our Technical Service for use below +2°C

Mounting:
In line mounted

MATERIALS

T70:
Body and Cover: Aluminium or zinc alloy
Seals: Nitrile rubber

S/511, S/513, S/514:
Cover: aluminium (S/511), plastic POM (S/513, S/514)
Silencer shell: plastic POM (S/513, S/514)
Cup seal: polyurethane
O'ring: nitrile
Element: porous plastic (S/513, S/514)

T 70

| 1 | Port size *3) | | | Flow factor 1 - 2 | | | Flow factor 2- 3 | | | Flow from 1-2 at 6-5 bar | | MODELS | Spare kit |
|---|---------------|--------|---------|-------------------|------|--------|------------------|------|--------|--------------------------|------|-------------------|-----------|
| | Inlet | Outlet | Exhaust | C*1) | Cv | Kv *2) | C*1) | Cv | Kv *2) | (l/min) | kg | | |
| | G1/8 | G1/8 | G1/8 | 3,8 | 0,93 | 0,81 | 7 | 1,72 | 1,49 | 837 | 0,15 | T70C1800K0 | T70C1800 |
| | G1/4 | G1/4 | G1/4 | 7,4 | 1,8 | 1,58 | 9,7 | 2,38 | 2,07 | 1289 | 0,13 | T70C2800K0 | T70C2800 |
| | G3/8 | G3/8 | G3/8 | 14,5 | 3,55 | 3,1 | 20,5 | 5 | 4,37 | 2656 | 0,21 | T70C3800K0 | T70C3800 |
| | G1/2 | G1/2 | G1/2 | 19,7 | 4,83 | 4,2 | 25 | 6,13 | 5,33 | 3101 | 0,19 | T70C4800K0 | T70C4800 |

*1) Measured in dm³/ (s.bar)

*2) Measured in m³/ h

*3) For NPT version, please change substitute C into A at the 4th digit, e.g. T70A1800

S/511, S/513, S/514

| 1 | Port size 1 | Flow (1 to 2) | | Flow at 6- 5 bar | | Flow (2 to atm) | | | Silencer at exhaust port | kg | MODELS | Spare kit (seals only) |
|---|-------------|---------------|------|------------------|---------|-----------------|------|--------|--------------------------|------|--------------|------------------------|
| | | C*1) | Cv | Kv *2) | (l/min) | C*1) | Cv | Kv *2) | | | | |
| | G1/2 | 21,6 | 5,3 | 4,6 | 2022 | 39 | 9,56 | 8,3 | NO | 0,31 | S/511 | QS/511/00 |
| | G1/4 | 7,6 | 1,86 | 1,62 | 900 | 13,5 | 3,3 | 2,9 | YES | 0,25 | S/513 | QS/510/00 |
| | G1/2 | 5,3 | 5,3 | 4,6 | 2022 | 39 | 9,56 | 8,3 | YES | 0,35 | S/514 | QS/511/00 |

*1) Measured in dm³/ (s.bar)

*2) Measured in m³/ h

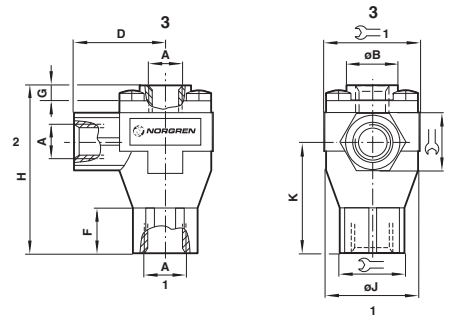
For further information



www.norgren.com/info/en7-102

T 70

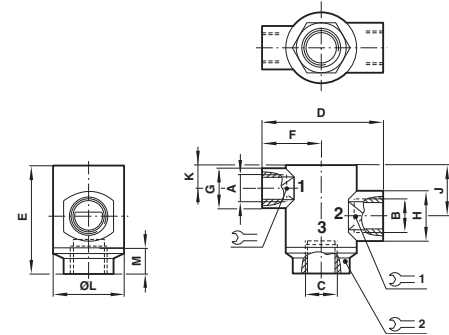
| A | ØB | D | F | G | H | ØJ | K | Ø1 | Ø1 | MODELS |
|------|----|----|------|-----|------|----|------|----|----|----------|
| G1/8 | 19 | 28 | 15,5 | 3,5 | 53 | 29 | 35,5 | 19 | 30 | T70C1800 |
| G1/4 | 19 | 28 | 15,5 | 3,5 | 53 | 29 | 35,5 | 19 | 30 | T70C2800 |
| G3/8 | 30 | 40 | 15,5 | 4 | 73,5 | 46 | 48 | 30 | 46 | T70C3800 |
| G1/2 | 30 | 40 | 15,5 | 4 | 73,5 | 46 | 48 | 30 | 46 | T70C4800 |



S/511

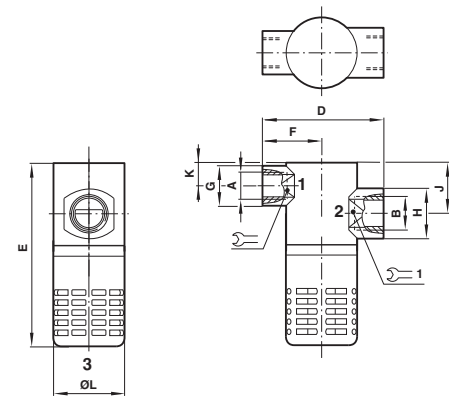
| A | B | C | D | E | F | G | H | Ø1 | J | K | ØL | M | Ø1 | Ø2 | MODELS |
|------|------|------|-----|----|----|------|----|----|----|----|------|------|----|----|--------|
| G1/2 | G3/4 | G3/4 | 100 | 86 | 50 | 28,5 | 35 | 36 | 48 | 17 | 47,5 | 15,0 | 32 | 30 | S/511 |

For NPT ranges, substitute C at the first digit, e.g. C/511



S/513, S/514

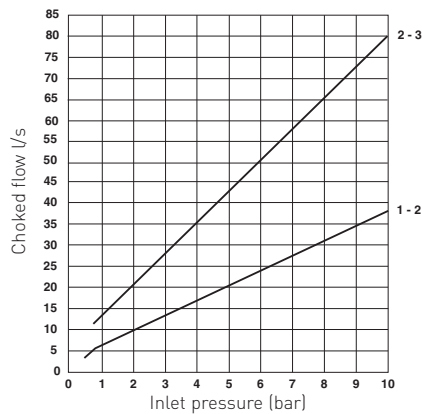
| A | B | C | D | E | F | G | H | Ø1 | J | K | ØL | Ø0 | Ø1 | MODELS |
|------|------|------|-----|-------|----|------|----|----|----|----|------|----|----|--------|
| G1/4 | G3/8 | 47,5 | 58 | 86,5 | 29 | 18,0 | 23 | 23 | 23 | 10 | 34,0 | 34 | 21 | S/513 |
| G1/2 | G3/4 | 63,0 | 100 | 134,0 | 50 | 28,5 | 35 | 36 | 48 | 17 | 47,5 | 59 | 30 | S/514 |



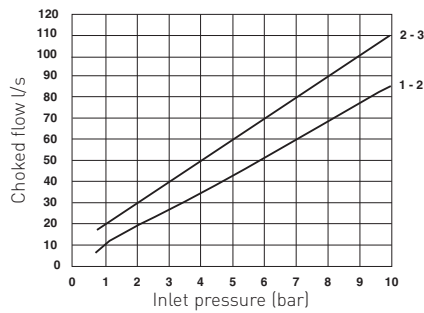
Characteristic curves

Choked flow versus inlet pressure
Way (1 - 2) + (2 - 3)

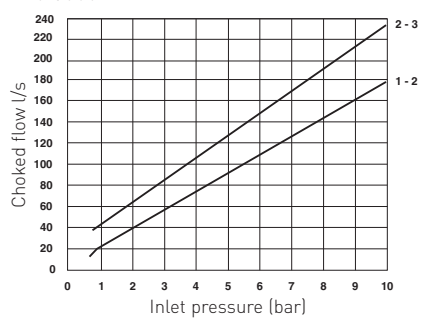
T70.1800



T70.2800



T70.3800



T70.4800

