

# OLYMPIAN PLUS PLUG-IN SYSTEM

## Pressure regulators

R64G, R68G - G1/4 ... G1 1/2



R64G



R68G

Diaphragm and balanced valve design ensure good regulation characteristics

Non-rising adjusting knob has snap-action lock

Standard options include non relieving models and alternative pressure ranges

### TECHNICAL DATA

#### Medium:

Compressed air only

#### Maximum inlet pressure:

17 bar (R64G)

20 bar (R68G)

#### Gauge ports:

Rc1/8

#### Ambient temperature:

-20°C ... +80°C

Consult our Technical Service for use below +2°C

#### Pressure range:

R64G: 0,3...17 bar

R68G: 0,4...17 bar

### MATERIALS

#### R64

Body & yoke: zinc alloy

Bonnet: aluminium

Elastomers: synthetic rubber

#### R68G

Body, bonnet & yoke: aluminium

Adjusting knob: acetal resin

Optional T-bar adjusting screw: steel

Elastomers: synthetic rubber

### R64G

		MODELS		ACCESSORIES				SERVICE KIT	
Port size	Flow* (dm <sup>3</sup> /s)	kg		Wall mounting bracket	Gauge 0 10 bar	3/2 Shut-off valve**	Silencer (shut-off valve)	Tamper resistant kit	
	35	1,54	<b>R64G-2GK-RMN</b>	74504-50	18-013-013	T64T-2GB-P1N	T40B1800	4355-51	R64G-KITR
	80	1,52	<b>R64G-3GK-RMN</b>	74504-50	18-013-013	T64T-3GB-P1N	T40B1800	4355-51	R64G-KITR
	120	1,49	<b>R64G-4GK-RMN</b>	74504-50	18-013-013	T64T-4GB-P1N	T40B1800	4355-51	R64G-KITR
	120	1,85	<b>R64G-6GK-RMN</b>	74504-50	18-013-013	T64T-6GB-P1N	T40B1800	4355-51	R64G-KITR

\*Typical flow with 10 bar inlet pressure, 6.3 bar set pressure 1 bar drop from set. For replacement regulator (without yoke) substitute 'N' at the 5th and 6th digits eg: R64G-NNK-RMN.

\*\* Threaded exhaust port.

### R68G

		MODELS		ACCESSORIES				SERVICE KIT	
Port size	Flow* (dm <sup>3</sup> /s)	kg		Wall mounting bracket	Gauge 0 10 bar	3/2 Shut-off valve**	Silencer (shut-off valve)	Tamper resistant kit	
	150	1,95	<b>R68G-6GK-RLN</b>	18-001-979	18-013-013	T68H-6GB-B2N	T40B2800	4355-51	R68G-KITR
	180	1,89	<b>R68G-8GK-RLN</b>	18-001-979	18-013-013	T68H-8GB-B2N	T40B2800	4355-51	R68G-KITR
	180	1,93	<b>R68G-AGK-RLN</b>	18-001-978	18-013-013	T68H-AGB-B2N	T40B2800	4355-51	R68G-KITR
	180	1,97	<b>R68G-BGK-RLN</b>		18-013-013	T68H-BGB-B2N	T40B2800	4355-51	R68G-KITR

\*Typical flow with 10 bar inlet pressure, 6.3 bar set pressure 1 bar drop from set. For replacement regulator (without yoke) substitute 'N' at the 5th and 6th digits eg: R68G-NNK-RLN.

\*\* Threaded exhaust port.

For further information



[www.norgren.com/info/en6-076](http://www.norgren.com/info/en6-076)

## OPTIONS SELECTOR

Port size	Substitute
1/4	2
3/8	3
1/2	4
3/4	6

Threads	Substitute
PTF	A
ISO Rc taper	B
ISO G parallel	G

Adjustment	Substitute
Knob	K
T-bar	T

R64G-★ ★ ★ - ★ ★ ★

Gauge	Substitute
With	G
Without	N

Outlet pressure adjustment range*	Substitute
0,3 ... 4 bar	F
0,3 ... 10 bar	M
0,7 ... 17 bar	S**

Diaphragm	Substitute
Relieving	R
Non relieving	N

\* Can be adjusted to pressures in excess of, and less than, those specified. Do not use these units to control pressures outside of the specified ranges.

\*\* Units with 17 bar outlet pressure range are available only with the T-bar adjustment; therefore substitute T at the 7th digit and S at the 9th position.

Port size	Substitute
3/4	6
1	8
1 1/4	A
1 1/2	B

Threads	Substitute
PTF	A
ISO Rc taper	B
ISO G parallel	G

Adjustment	Substitute
Knob	K
T-bar	T

R68G-★ ★ ★ - ★ ★ ★

Gauge	Substitute
With	G
Without	N

Outlet pressure adjustment range*	Substitute
0,3 ... 4 bar	F
0,4 ... 8 bar	L
0,7 ... 17 bar	S**

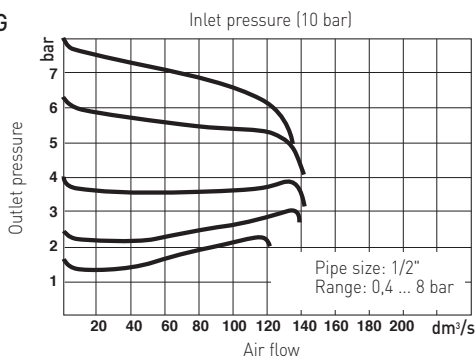
Diaphragm	Substitute
Relieving	R
Non relieving	N

\* Can be adjusted to pressures in excess of, and less than, those specified. Do not use these units to control pressures outside of the specified ranges.

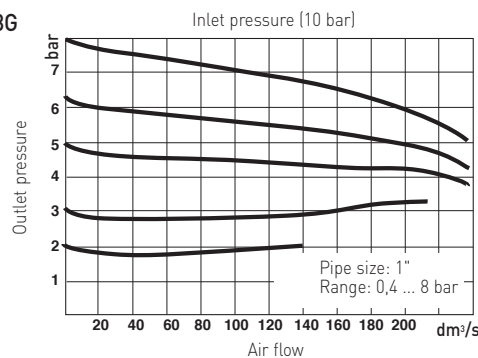
\*\* Units with 17 bar outlet pressure range are available only with the T-bar adjustment; therefore substitute T at the 7th digit and S at the 9th position.

## FLOW CHARACTERISTICS

R64G

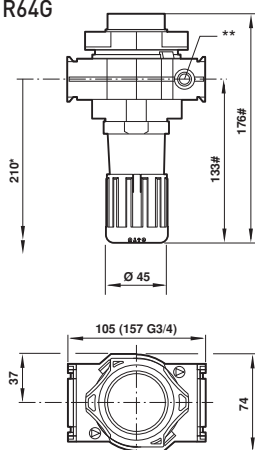


R68G

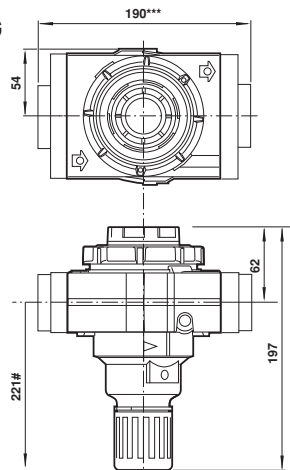


## DIMENSIONS

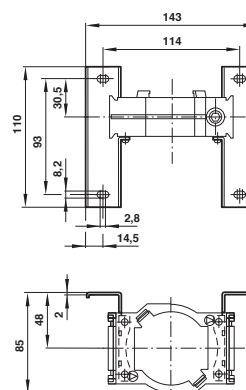
R64G



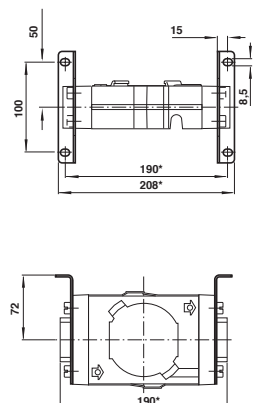
R68G



Bracket mounting (R64G)



Bracket mounting (R68G)



\* Minimum clearance required to remove unit from yoke  
# Reduces by 4 mm with knob in locked position

# Minimum clearance required to remove unit from yoke  
\*\*\* For 1 1/4" and 1 1/2" ported yokes add 10 mm  
Panel mounting hole Ø: 52 mm  
Panel thickness: 0 ... 6 mm