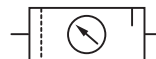


P1H

Miniature Series 07, Filter/Regulator-Lubricator G1/8 & G1/4

Compact design



Technical features

Fluid:

Compressed air

Maximum pressure:

 10 bar (Transparent bowl)
 17 bar (Metal bowl)

Pressure range:

 0,3 ... 7 bar, 0,3 ... 3,5 bar,
 0,1 ... 0,7 bar

Filter element:

5 or 40 µm

Port size:

 G1/8 or G1/4
 Rc1/8 (Gauge)

Bowl:

31 ml

Flow:

 Start point 0,24 dm³/s
 see below

Drain:

Manual or automatic

Operating temperature:

-20 ... +50°C (Transparent bowl)

-20 ... +65°C (Metal bowl)

 Air supply must be dry enough
 to avoid ice formation at
 temperatures below +2°C.

Materials:

Body: Zinc alloy

Bonnet: Acetal (Regulator)

Knob: Acetal

Bowl: Plastic or Zinc alloy

Filter element: Sintered PE

Valve: Brass

Sight dome: PA

Seals: NBR

Technical data, standard model - relieving

Symbol	Port size	Pressure range (bar)	Filter element (µm)	Flow *1) (dm ³ /s)	Drain	Bowl	Gauge	Weight (kg)	Model
	G1/8	0,3 ... 7	40	3	Manual	Plastic	Standard	0,35	P1H-100-M30G
	G1/4	0,3 ... 7	40	3	Manual	Plastic	Standard	0,35	P1H-200-M30G
	G1/8	0,3 ... 7	40	3	Automatic	Plastic	Standard	0,35	P1H-100-A30G
	G1/4	0,3 ... 7	40	3	Automatic	Plastic	Standard	0,35	P1H-200-A30G

*1) Approximate flow at 7 bar inlet pressure, 6,3 bar set pressure and a droop of 1 bar from set.

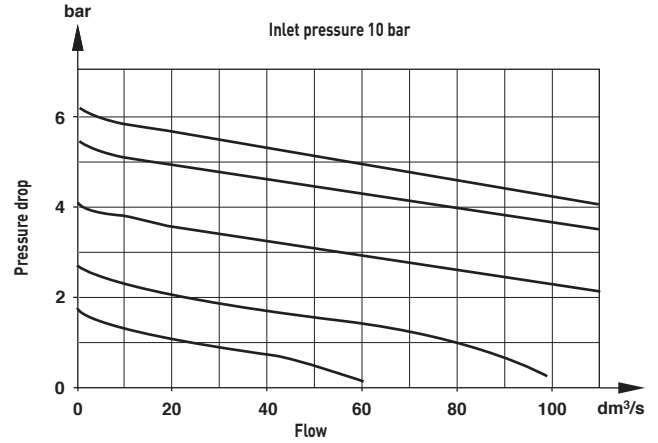
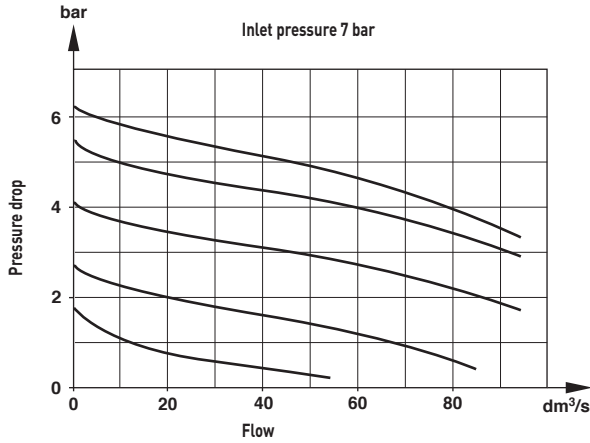
Options selector

P★H-★★★★★★

Integral Wall Bracket	Substitute	←	→	Threads	Substitute
Without	1			PTF	A
With	T			ISO G	G
Port Size	Substitute	←	→	Lubricator reservoir	Substitute
1/8"	1			Plastic with drain	A
1/4"	2			Plastic without drain	Q
Bowl/Pressure range/Gauge	Substitute	←	→	Metal with drain	M
Plastic/0,3 ... 7 bar/with	00			Eement	Substitute
Plastic/0,3 ... 7 bar/without	01			5 µm	1
Plastic/0,3 ... 3,5 bar/without	04			40 µm	3
Plastic/0,3 ... 3,5 bar/with	05			Drain	Substitute
Metal/0,3 ... 7 bar/with	40			Automatic	A
Metal/0,3 ... 7 bar/without	41			Manual	M
Metal/0,3 ... 3,5 bar/without	44				
Metal/0,3 ... 3,5 bar/with	45				

Flow characteristics

Port size 1/4", 40 µm Filter element, pressure range 0,3 ... 7 bar









Accessories

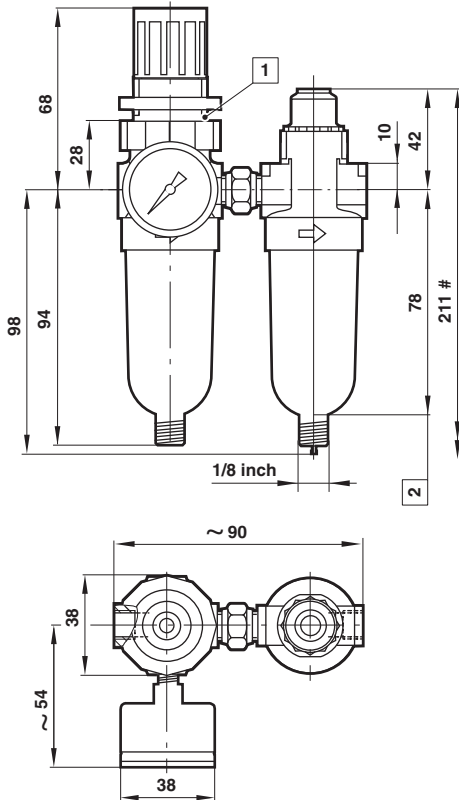


Service kit

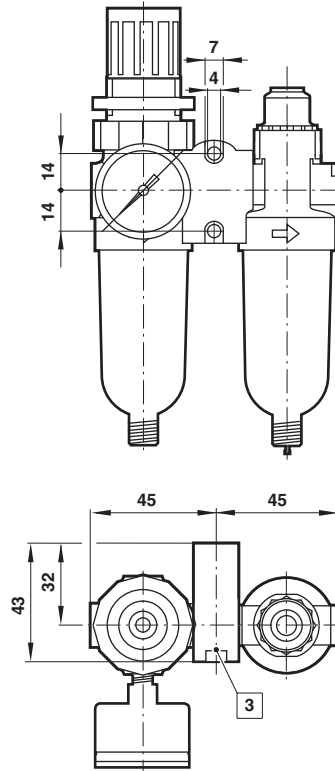


Wall mounting bracket and panel nut	Panel nut	Tamper resistant field modification	Wall mounting bracket	Tamper resistant seal wire for lubricator	Gauge ø 40 mm
					
1 & 4	4	3	7	6	
18-025-003 (with plastic nut) 18-025-004 (with metal nut)	2962-04 (Metal) 2962-89 (Plastic)	18-001-092	6700-30	2117-01	18-013-990 (0 ... 4 bar) 18-013-989 (0 ... 10 bar)

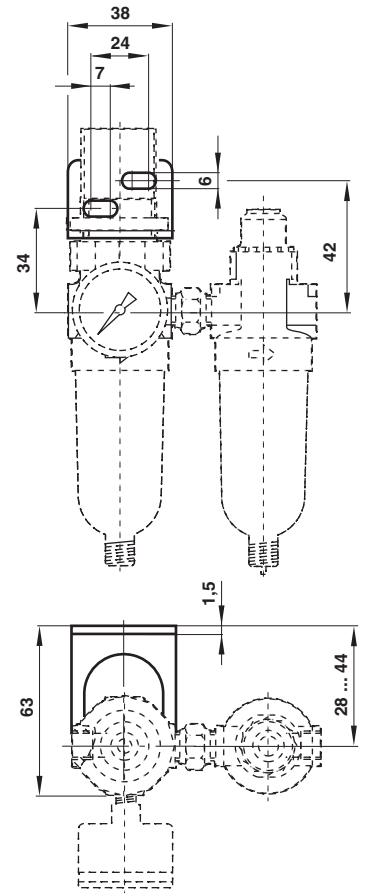
Dimensions
P1H-...



PTH-...



Wall mounting bracket



Minimum clearance required to remove bowl
 1 ø31 mm for panel mounting

Warning

These products are intended for use in industrial compressed air systems only. Do not use these products where values can exceed those listed under **Technical features/data**.

Before using these products with fluids other than those specified, for non-industrial applications, life-support systems, or other applications not within published specifications, consult NORGREN.

Through misuse, age, or malfunction, components used in fluid power systems can fail in various modes.

The system designer is warned to consider the failure modes of all component parts used in fluid power systems and to provide adequate safeguards to prevent personal injury or damage to equipment in the event of such failure.

System designers must provide a warning to end users in the system instructional manual if protection against a failure mode cannot be adequately provided.

System designers and end users are cautioned to review specific warnings found in instruction sheets packed and shipped with these products.