

# PNEUFIT MULTI-CONNECTORS B0B0, B0P0, B0S0 Series

Metric



Enable connection of multiple airlines

Series B0B0 Bulkhead is designed to give simple tube connections

Series B0P0 Plugs and B0S0 Sockets are used when the two sections need to be separated and remain in a fixed position

B0TS Tube socks are used to neatly group tubes and offer protection of the tube entry

B0DC Dust caps (for both plug and socket sides) are designed to protect threads and prevent ingress

Multi-connectors offer the benefit of single rather than multiple holes in panel, cabinets and equipment. Options include a plug and socket combination, or a simple bulkhead.

## TECHNICAL DATA

### Medium:

Compressed air (do not use with O<sub>2</sub>)

### Operating pressure:

Vacuum to 12 bar

### Operating temperature:

-20 to 80°C

Consult our Technical Service for use below +2°C

### Acceptable panel thickness:

0 to 5 mm

### Standard PIF sizes:

4, 6, 8 mm

## MATERIALS

Body: Acetal

### Fittings

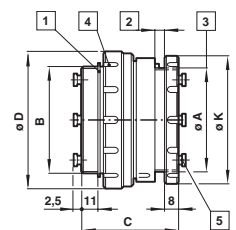
Collet: nickel-plated brass

Cartridge insert: brass

O'-ring: nitrile (silicone free)

- 1 Circlip in carbon steel
- 2 Panel width (up to 5 mm)
- 3 Panel mount
- 4 12 equal-spaced  $\phi$  4x2 notches on nut & socket locking ring
- 5 PNEUFIT Push-In traceability two letter code on plug and socket end faces

### Assemblies Plug and socket parts assembled together

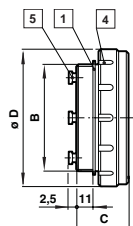


For multi-connector $\emptyset$	A panel $\emptyset$	B	C	D	K	MODELS
50	40	M40 x 1,5	54	55	50	See next page
70	58	M58 x 1,5	54	75	70	See next page

For further information

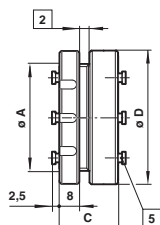


[www.norgren.com/info/en7-070](http://www.norgren.com/info/en7-070)



## Plugs

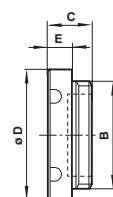
For multi-connector Ø	Number PIF	PIF Ø	B panel Ø	C	D Ø	MODELS
50	4	4	M40 x 1,5	27	55	B0P0040450
50	7	4	M40 x 1,5	27	55	B0P0040750
70	12	4	M58 x 1,5	27	75	B0P0041270
50	4	6	M40 x 1,5	27	55	B0P0060450
50	7	6	M40 x 1,5	27	55	B0P0060750
50	4	8	M40 x 1,5	27	55	B0P0080450



## Bulkheads

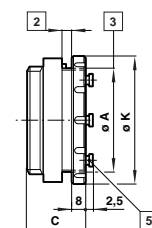
For multi-connector Ø	Number PIF	PIF Ø	A panel Ø	C	D Ø	MODELS
50	4	4	40	32	50	B0B0040450
50	7	4	40	32	50	B0B0040750
70	12	4	58	32	70	B0B0041270
50	4	6	40	32	50	B0B0060450
50	7	6	40	32	50	B0B0060750
50	4	8	40	32	50	B0B0080450

Bulkheads come with a locknut included



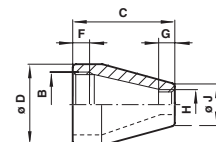
## Dusk cap for plugs

For multi-connector Ø	B	C	D Ø	E	MODELS
50	M46 x 1,5	18,5	50	9	B0DC000050P
70	M65 x 1,5	18,5	75	9	B0DC000070P



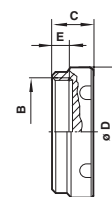
## Sockets

For multi-connector Ø	Number PIF	PIF Ø	A panel Ø	C	K Ø	MODELS
50	4	4	40	33	50	B0S0040450
50	7	4	40	33	50	B0S0040750
70	12	4	58	33	70	B0S0041270
50	4	6	40	33	50	B0S0060450
50	7	6	40	33	50	B0S0060750
50	4	8	40	33	50	B0S0080450



## Tube socket

For multi-connector Ø	B	C	D Ø	F Ø	G Ø	H	I Ø	MODELS
50	M40 x 1,5	55	50	12,5	13	M25 x 1,5	36	B0TS000050
70	M58 x 1,5	70	70	14,5	13	M32 x 1,5	43	B0TS000070



## Dusk cap for sockets

For multi-connector Ø	B	C	D Ø	E	MODELS
50	M46 x 1,5	18	55	13	B0DC000050S
70	M65 x 1,5	18	75	12	B0DC000070S

## MACHINING DETAIL

When more than one connector is used on an assembly the following dimensional constraints apply

For multi-connector Ø	A Ø	L	N
50	40	70	21
70	58	90	30,5

