

# 3/2 SLEEVE VALVES M/7200 Series

Manually operated - G1/8 to G1/2



Sliding sleeve operation  
 Very compact in-line units  
 Easy to install  
 Very simple and reliable operation

## TECHNICAL DATA

### Medium:

Compressed air, filtered, lubricated and non-lubricated

### Operation:

Sleeve valve, directly actuated, with open exhaust

### Mounting:

Concentrically directly in the pipework

### Port sizes:

G1/8 M/7218

G1/4 M/7228

G3/8 M/7238

G1/2 M/7248

### Operating pressure:

0 to 16 bar

### Operating temperature:

-20°C to +80°C max.

Consult our Technical Service for use below +2°C

## MATERIALS

Body: nickel plated brass

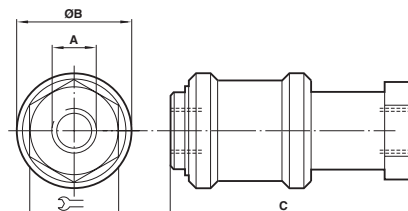
Sleeve: clear anodised aluminium

Seals: nitrile rubber

|  | Port size | Flow factor Cv | Flow 1 - 2 [l/min] | kg   | MODELS |
|--|-----------|----------------|--------------------|------|--------|
|  | G1/8      | 0,7            | 678                | 0,05 | M/7218 |
|  | G1/4      | 1,3            | 1107               | 0,09 | M/7228 |
|  | G3/8      | 2,1            | 2035               | 0,16 | M/7238 |
|  | G1/2      | 3,2            | 3131               | 0,24 | M/7248 |

Flow (l/min) 6 bar inlet, 1 bar pressure drop.

| A    | B  | C  | Ø  | MODELS |
|------|----|----|----|--------|
| G1/8 | 25 | 48 | 14 | M/7218 |
| G1/4 | 30 | 58 | 17 | M/7228 |
| G3/8 | 35 | 68 | 22 | M/7238 |
| G1/2 | 40 | 80 | 27 | M/7248 |



For further information



[www.norgren.com/info/en7-108](http://www.norgren.com/info/en7-108)