

PRECISION FLOW REGULATORS C/600, M/600 Series

G1/8 to G1/2

1/8 NPT to 1/2 NPT



Line mounted general purpose regulators

Captive regulating needle will not blow out when unscrewed

Calibrated adjusting knob, can be locked

Brass body

TECHNICAL DATA

Medium:

Compressed air, filtered, lubricated and non-lubricated

Operation:

Uni-directional

Operating pressure:

0,3 to 16 bar

Operating temperature:

-20°C to +80°C

Consult our technical service for use below +2°C.

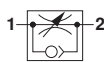
MATERIALS

Body: brass

Adjusting knob, locking ring and panel mounting ring: chromium plated

Seals: nitrile rubber

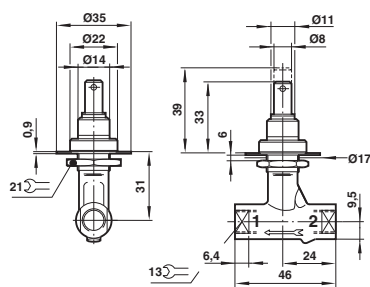
Operation	Port size (inch)	kg	MODELS BSPP	Spare kit models BSPP
Uni-directional	1/8	0,13	S/636	QS/520/00
Uni-directional	1/4	0,22	M/637	QS/521/00
Uni-directional	1/2	0,78	M/639	QS/522/00
			NPT	NPT
Uni-directional	1/8	0,13	C/636	QC/520/00
Uni-directional	1/4	0,22	C/637	QC/521/00
Uni-directional	1/2	0,78	C/639	QC/522/00



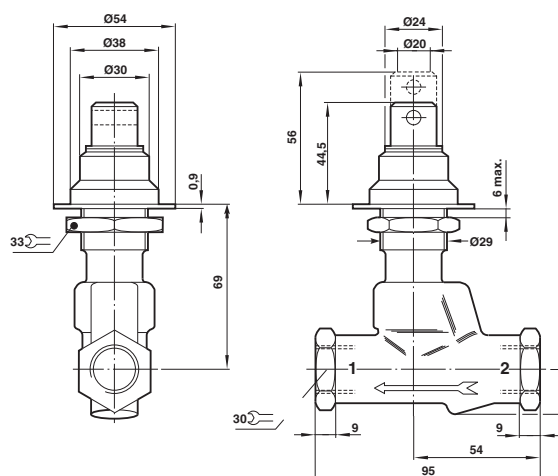
BSPP = according to BS2779 and ISO - 228/1

NPT = Products are finished with National Pipe Straight Threads for Couplings, which are specifically designed to mate with NPT male threads

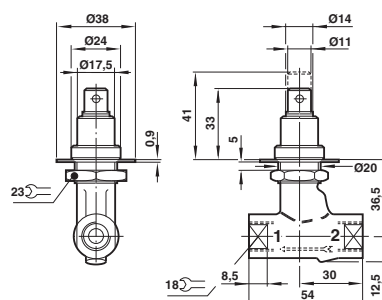
S/636



M/639



M/637



For further information



www.norgren.com/info/en7-077