

**Reduce the noise levels of pneumatic equipment**  
**High flow capacity with low back pressure**  
**Brass mesh screen and aluminium construction**  
**Provide improved flow, longer life and cleanable element**  
**Shock and vibration resistant to EN 61373, Category 1, class A and B**



**Technical features**

**Medium:**

Compressed air, filtered, lubricated and non-lubricated, inert gases

**Operation:**

Exhaust silencer

**Operating pressure:**

20 bar max. (290 psi)

**Ambient temperature:**

-40 ... +80°C max. (-40 ... +176°F)

Air supply must be dry enough to avoid ice formation at temperatures below +2°C (+35°F).

**Materials**

Body: aluminium and shell, Filter element: brass mesh

**Technical data**

**Male thread**

Port size	Flow factor Cv	C*1	Kv*2	Weight (kg)	Model ISO R	Model NPT
1/8	2	8,2	1,75	0,03	MB001B	MB001A
1/4	2,2	9	1,92	0,03	MB002B	MB002A
3/8	2,94	12	2,56	0,03	MBP03B	MBP03A
3/8	4,78	19,5	4,16	0,10	MB003B	MB003A
1/2	5,49	22,4	4,78	0,09	MB004B	MB004A
3/4	5,49	22,4	4,78	0,09	MBP06B	MBP06A
3/4	12,5	51	10,78	0,45	MB006B	MB006A
1	15,68	64	13,65	0,40	MB008B	MB008A
1 1/4	16,67	68	14,5	0,40	MBP10B	MBP10A

\*1) Measured in dm<sup>3</sup>/(s.bar)

\*2) Measured in m<sup>3</sup>/h

**Female thread**

Port size	Flow factor Cv	C*1	Kv*2	Weight (kg)	Model ISO Rc	Model NPT
1/8	2	8,2	1,75	0,03	MA001B	MA001A
1/4	2,57	10,5	1,29	0,03	MA002B	MA002A
3/8	5,83	23,8	5,07	0,10	MA003B	MA003A
1/2	5,71	23,3	4,97	0,09	MA004B	MA004A
3/4	16,18	66	14,07	0,45	MA006B	MA006A
1	16,67	68	14,5	0,40	MA008B	MA008A

Port size	Flow factor Cv	C*1	Kv*2	Weight (kg)	Model ISO G	Model NPT
1 1/4	26,7	110	23,45	0,62	MA010C	MA010A
1 1/2	40,93	167	35,6	0,60	MA012C	MA012A
2	53,9	220	46,9	0,76	MA016C	MA016A

**Option selector**

**Male thread**

Port size	Substitute
1/8"	001
1/4"	002
3/8"	P03*
3/8"	003
1/2"	004
3/4"	P06*
3/4"	006
1"	008
1 1/4"	P10*

\* Compact size

**MB★★★★**

Thread form	Substitute
NPT	A
ISO R	B

**Female thread**

MA★★★★

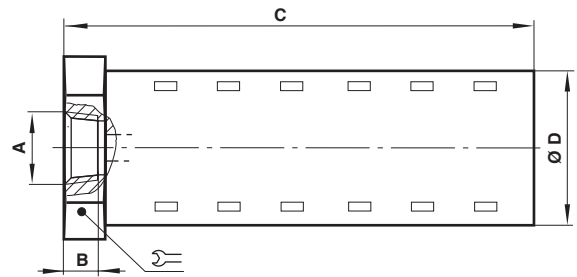
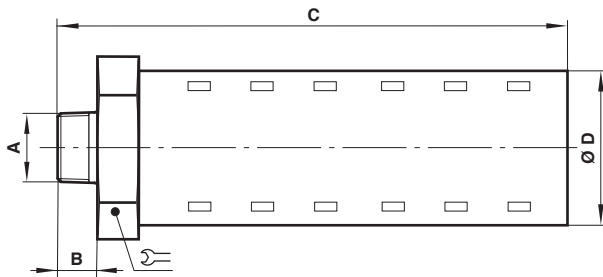
Port size	Substitute
1/8"	001
1/4"	002
3/8"	003
1/2"	004
3/4"	006
1"	008
1 1/4"	010
1 1/2"	012
2"	016

Thread form	Substitute
NPT	A
ISO Rc	B *1)
ISO G parallel	C *1)

\*1) See model on technical data table

**Dimensions**

Dimensions shown in mm



A	B	C	D		Model
1/8 inch	9	51	21	21	MB001#
1/4 inch	13	55	21	21	MB002#
3/8 inch	13	55	21	21	MBP03#
3/8 inch	13	88	32	32	MB003#
1/2 inch	17	92	32	32	MB004#
3/4 inch	17	92	32	32	MBP06#
3/4 inch	20	134	51	51	MB006#
1 inch	23	138	51	51	MB008#
1 1/4 inch	26	140	51	51	MBP10#

A	B	C	ØD		Model
1/8 inch	6	42	21	21	MA001#
1/4 inch	9	45	21	21	MA002#
3/8 inch	9	78	32	32	MA003#
1/2 inch	12	83	32	32	MA004#
3/4 inch	12	118	51	51	MA006#
1 inch	15	118	51	51	MA008#
1 1/4 inch	15	144	64	64	MA010#
1 1/2 inch	15	144	64	64	MA012#
2 inch	16	168	76	76	MA016#

**Warning**

These products are intended for use in industrial compressed air and rail transport systems only. Do not use these products where pressures and temperatures can exceed those listed under 'Technical features'.  
Before using these products with fluids other than those specified, for non-industrial applications, life-support systems, or other applications not within published specifications, consult NORGREN.

Through misuse, age, or malfunction, components used in fluid power systems can fail in various modes.

The system designer is warned to consider the failure modes of all component parts used in fluid power systems and to provide adequate safeguards to prevent personal injury or damage to equipment in the event of such failure.  
System designers must provide a warning to end users in the system instructional manual if protection against a failure mode cannot be adequately provided.  
System designers and end users are cautioned to review specific warnings found in instruction sheets packed and shipped with these products.