

OLYMPIAN PLUS PLUG-IN SYSTEM

Lubricators

L64, L68 - G1/4 ... G1 1/2



Micro-fog plug-in lubricators for best lubrication in general purpose pneumatic applications
Oil-fog option available

Ambient temperature:
-20°C ... +80°C
Consult our Technical Service for use below +2°C

TECHNICAL DATA

Medium:
Compressed air only
Maximum inlet pressure:
17 bar
Start point:
L64: 1,5 dm³/s
L68: 6 dm³/s
Bowl capacity (litre):
L64: 0,2
L68: 0,5

MATERIALS

L64
Body & yoke: zinc alloy
Sight dome: transparent nylon
Elastomers: synthetic rubber
L68
Bowl (0,5 litre), body & yoke: aluminium
Sight dome: transparent nylon
Elastomers: synthetic rubber

L64

MODELS				ACCESSORIES			SERVICE KIT								
Port size	Flow* (dm ³ /s)	kg		Wall mounting bracket	3/2 Shut-off valve**	Silencer (shut-off valve)									
								G1/4	25	1,42	L64M-2GP-EDN	74504-50	T64T-2GB-P1N	T40B1800	L64M-KIT
								G3/8	62	1,40	L64M-3GP-EDN	74504-50	T64T-3GB-P1N	T40B1800	L64M-KIT
								G1/2	72	1,37	L64M-4GP-EDN	74504-50	T64T-4GB-P1N	T40B1800	L64M-KIT
								G3/4	72	1,73	L64M-6GP-EDN	74504-50	T64T-6GB-P1N	T40B1800	L64M-KIT

*Typical flow with 6.3 bar inlet, 0.5 bar pressure drop. To order a basic unit without yoke substitute 'N' at the 5th and 6th letters respectively e.g. L64M-NNP-EDN. Models listed are Micro-fog. For Oil-fog models, including kits, replace 'M' at the 4th digit by 'C' e.g. L64C-4GP-EDN ** Threaded exhaust port.

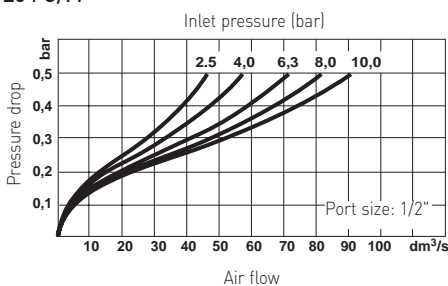
L68

MODELS				ACCESSORIES			SERVICE KIT								
Port size	Flow* (dm ³ /s)	kg		Wall mounting bracket	3/2 Shut-off valve**	Silencer (shut-off valve)									
								G3/4	200	2,10	L68M-6GP-ERN	18-001-979	T68H-6GB-B2N	T40B2800	L68M-KIT
								G1	200	2,04	L68M-8GP-ERN	18-001-979	T68H-8GB-B2N	T40B2800	L68M-KIT
								G1 1/4	200	2,08	L68M-AGP-ERN	18-001-978	T68H-AGB-B2N	T40B2800	L68M-KIT
								G1 1/2	200	2,12	L68M-BGP-ERN	-	T68H-BGB-B2N	T40B2800	L68M-KIT

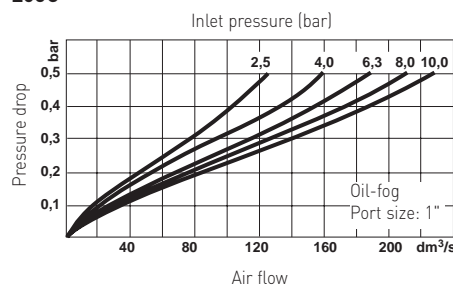
*Typical flow with 6.3 bar inlet, 0.5 bar pressure drop. To order a basic unit without yoke substitute 'N' at the 5th and 6th letters respectively e.g. L68M-NNP-EDN. Models listed are Micro-fog. For Oil-fog models, including kits, replace 'M' at the 4th digit by 'C' e.g. L68C-4GP-EDN ** Threaded exhaust port.

FLOW CHARACTERISTICS

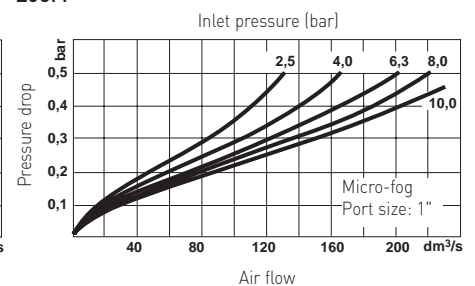
L64 C/M*



L68C*



L68M*



* Not fixed venturi version. Please contact Norgren Technical for fixed venturi information

For further information



www.norgren.com/info/en6-078

OPTIONS SELECTOR

L64★-★P-E★★

Type	Substitute
Oil-fog	C
Micro-fog	M

Port size	Substitute
1/4"	2
3/8"	3
1/2"	4
3/4"	6

Threads	Substitute
PTF	A
ISO Rc taper	B
ISO G parallel	G

Options	Substitute
None	N
Quick fill device	Q

Bowl	Substitute
Metal with liquid level indicator	D
Long metal bowl with liquid level indicator	A

L68★-★P-★★★

Type	Substitute
Oil-fog	C
Micro-fog	M

Port size	Substitute
3/4"	6
1	8
1 1/4	A
1 1/2	B

Threads	Substitute
PTF	A
ISO Rc taper	B
ISO G parallel	G

Options	Substitute
None	N
Quick fill device	Q

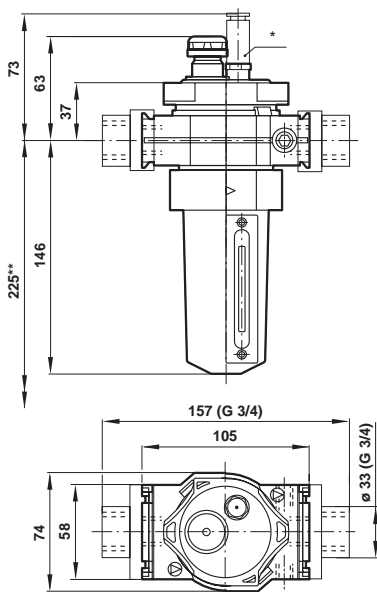
Bowl	Substitute
0,5 l with sight glass	R*
1 l with sight glass	U*

Drain	Substitute
Closed bottom bowl	E
Remote fill	R

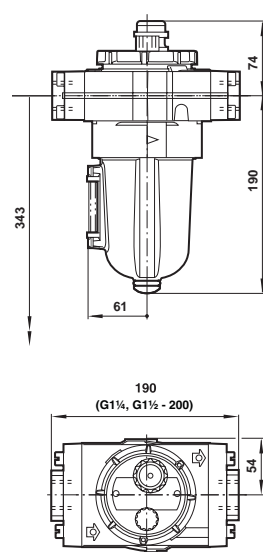
*Remote fill only available with 0,5 and 1 litre bowls

DIMENSIONS

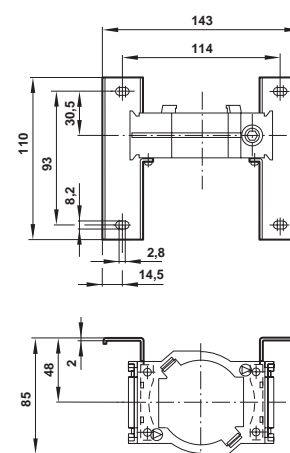
L64



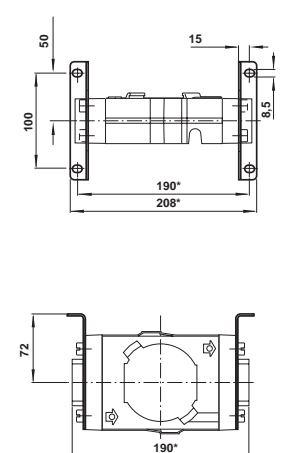
L68



Bracket mounting (L64)



Bracket mounting (L68)



*Optional quick fill device

** Minimum clearance required to remove bowl

Minimum clearance required to remove bowl

** For 1 1/4" and 1 1/2" ported yokes add 10 mm