

# OLYMPIAN PLUS PLUG-IN SYSTEM

## High efficiency oil removal filters

F64C/H, F68C/H - G1/4 ... G1



F64H

F68C

High efficiency coalescing filters

Coalescing element removes sub-micron particles and converts oil and water mist to liquid form to drain away  
Service indicator standard

### TECHNICAL DATA

Medium:

Compressed air only

Maximum inlet pressure:  
17 bar

Remaining oil content:  
0,01 mg/m<sup>3</sup> max at 21° C

Particle removal:  
To 0,01 µm

Ambient temperature:  
-20°C ... +65°C

Consult our Technical Service for use below +2°C

### MATERIALS

#### F64C/F64H

Body: zinc alloy  
Bowl: aluminium  
Yoke: aluminium  
Element: composite  
Elastomers: synthetic rubber

#### F68C/F68H

Body & bowl: aluminium  
Yoke: aluminium  
Filter element: composite  
Elastomers: synthetic rubber

### F64C/H

				MODELS		ACCESSORIES			SERVICE KIT
Port size	kg	Flow* (dm <sup>3</sup> /s)		Auto drain	Manual drain	Wall mounting bracket	3/2 Shut-off valve**	Silencer (shut-off valve)	Auto drain
G1/4	1,48	16		F64C-2GD-AD0	F64C-2GD-MD0	74504-50	T64T-2GB-P1N	T40B1800	F64C-KITA0C
G3/8	1,70	28		F64H-3GD-AD0	F64H-3GD-MD0	74504-50	T64T-3GB-P1N	T40B1800	F64H-KITA0C
G1/2	1,67	28		F64H-4GD-AD0	F64H-4GD-MD0	74504-50	T64T-4GB-P1N	T40B1800	F64H-KITA0C
G3/4	2,01	28		F64H-6GD-AD0	F64H-6GD-MD0	74504-50	T64T-6GB-P1N	T40B1800	F64H-KITA0C

\* To maintain stated oil content at 6.3 inlet pressure \*\*Threaded exhaust port. For replacement filter (without yoke or pre-filter) substitute 'N' at the 5th and 6th digits eg: F64H-NND-AD0.

### F68C/H

				MODELS		ACCESSORIES			SERVICE KIT
Port size	kg	Flow* (dm <sup>3</sup> /s)		Auto drain	Manual drain	Wall mounting bracket	3/2 Shut-off valve**	Silencer (shut-off valve)	Auto drain
G1/2	2,38	35		F68C-4GD-AR0	F68C-4GD-MR0	18-001-979	T68H-4GB-B2N	T40B2800	F68C-KITA0C
G3/4	2,72	35		F68H-6GD-AU0	F68H-6GD-MU0	18-001-979	T68H-6GB-B2N	T40B2800	F68H-KITA0C
G1	2,66	60		F68H-8GD-AU0	F68H-8GD-MU0	18-001-979	T68H-8GB-B2N	T40B2800	F68H-KITA0C

\* To maintain stated oil content at 6.3 inlet pressure \*\*Threaded exhaust port. For replacement filter (without yoke) substitute 'N' at the 5th and 6th digits eg: F68H-NND-AU0.

### TYPICAL PERFORMANCE CHARACTERISTICS

Inlet pressure (bar)	Maximum flow dm <sup>3</sup> /s*			
	F64C	F64H	F68C	F68H
1	6,4	11,2	14	24
3	11,0	19,3	24	41
5	14,3	24,9	31	53
6,3	16,0	28,0	35	60
7	16,9	29,5	36	63
9	19,1	33,5	42	72

\* Maximum flow to maintain stated oil removal performance

For further information



www.norgren.com/info/en6-065

# OLYMPIAN PLUS PLUG-IN SYSTEM

## High efficiency oil removal filters

F64C/H, F68C/H - G1/4 ... G1

### OPTIONS SELECTOR

F 64 ★ - ★ ★ ★ - D ★ ★

<b>Body type</b>	Substitute	←	→	<b>Element</b>	Substitute
G1/4	C			Coalescing	0
G3/8, G1/2, G3/4	H				
<b>Port size</b>	Substitute	←	→	<b>Drain</b>	Substitute
1/4"	2			Manual	M
3/8"	3			Auto drain	A
1/2"	4				
3/4"	6			<b>Service life indicator</b>	Substitute
				Mechanical	D
				Electrical	E
				Without	N
<b>Threads</b>	Substitute	←	→		
PTF	A				
ISO Rc taper	B				
ISO G parallel	G				

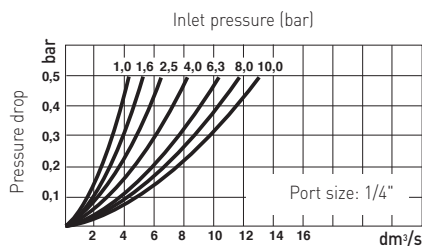
F 68 ★ - ★ ★ ★ - ★ ★ ★

<b>Body type</b>	Substitute	←	→	<b>Element</b>	Substitute
G1/2	C			Coalescing	0
G3/4, G1	H				
<b>Port size</b>	Substitute	←	→	<b>Bowl</b>	Substitute
3/4"	6			0,5 l with liquid level indicator	R*
1	8			1 l with liquid level indicator	U
1 1/4	A				
1 1/2	B				
<b>Threads</b>	Substitute	←	→	<b>Drain</b>	Substitute
PTF	A			Manual	M
ISO Rc taper	B			Auto drain	A
ISO G parallel	G				
				<b>Service life indicator</b>	Substitute
				Mechanical	D
				Electrical	E
				Without	N

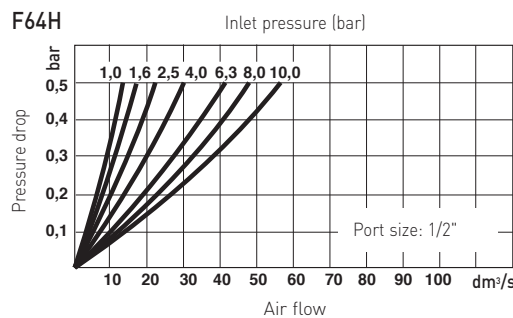
\* Only available with F68C

### FLOW CHARACTERISTICS

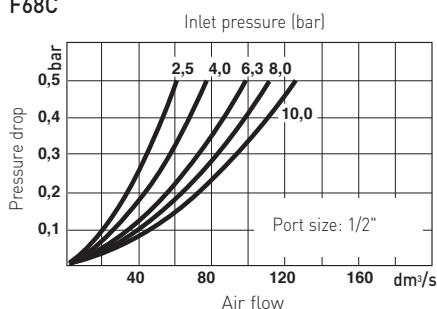
F64C



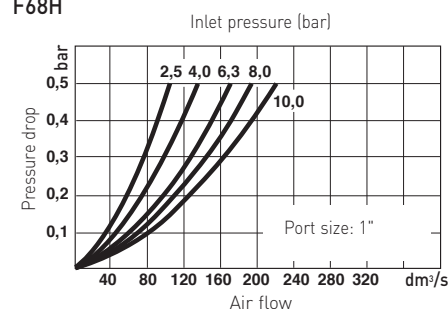
F64H



F68C

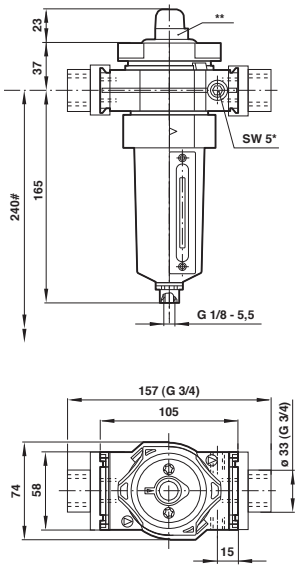


F68H

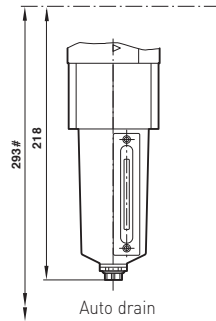


## DIMENSIONS

F64C

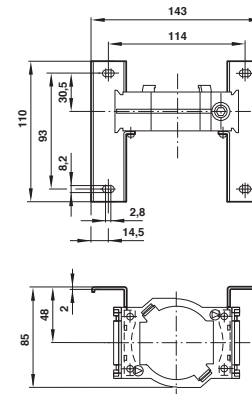


F64H

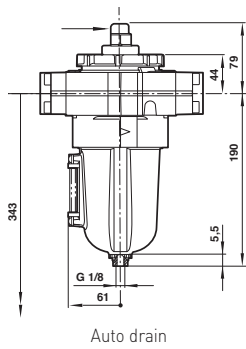


- \* Gauge port Rc1/8
- \*\* Optional service indicator
- # Minimum clearance required to remove bowl

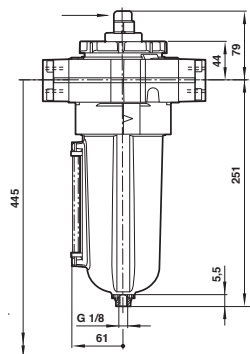
Bracket mounting (F64C/H)



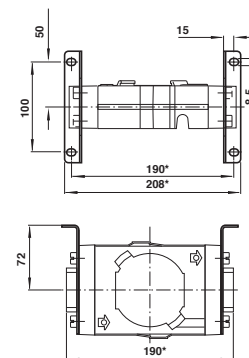
F68C



F68H



Bracket mounting (F68C/H)



- # Minimum clearance required to remove bowl
- \*\* Standard service indicator
- \*\*\* For 1 1/4" and 1 1/2" ported yokes add 10 mm

