

BUSCHJOST 84740 SERIES

2/2 - way valves DN 15 ... DN 25



For aggressive gases and liquids
Pressure actuated by external fluid
Seat valves
Optical position indicator is standard
Damped closing (valve closes against flow direction)
Suitable for contaminated process fluids
Suitable for vacuum up to max. 90%
Reversed flow direction optional
High flow rate
Optional pressure actuation by liquid pilot fluids

TECHNICAL DATA

Switching function:
Normally closed
Flow direction:
Determined
Internal thread:
G1/2 ... G1 or 1/2 NPT ... 1 NPT
Operating pressure:
0 - 16 bar (see technical data)
Mounting position:
As required

Process fluid characteristics / Valve material

Temperature:
Fluid: -10°C ... max. +180°C
Ambient: -10°C ... max. +60°C

Material body:
Stainless steel

Seat seal:
PTFE

Internal parts:
Stainless steel

Spindle sealing:
PTFE / FPM, self-adjusting

Pilot fluid characteristics / Actuator material

Pilot fluid:
Neutral gases

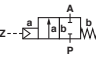
Fluid temperature:
max. +60°C

Material body:
Polyamid 66 with 30% fibre glass

Seat seal:
NBR

Internal parts:
Stainless steel, Brass

Actuator Ø 50 mm

Symbol	Port size	DN mm	kv-value m³/h	MODELS	Operating pressure bar**		Position indicator: on/off with micro switches	NAMUR adapter plate	Position indicator to NAMUR EN 50227
					PTFE	Normally open*			
	G1/2	15	4,8	84742XX.0000.00000	00	01	23	50	58
	G3/4	20	10,0	84743XX.0000.00000	0 - 16	0 - 16	0 - 16	0 - 16	0 - 16
	G1	25	14,0	84744XX.0000.00000	0 - 8	0 - 8	0 - 8	0 - 8	0 - 8
					0 - 5	0 - 5	0 - 5	0 - 5	0 - 5

* Pilot pressure 1 - 10 bar, pilot connection Z1

** Pilot pressure 3,5 - 10 bar, pilot connection Z2

For further information



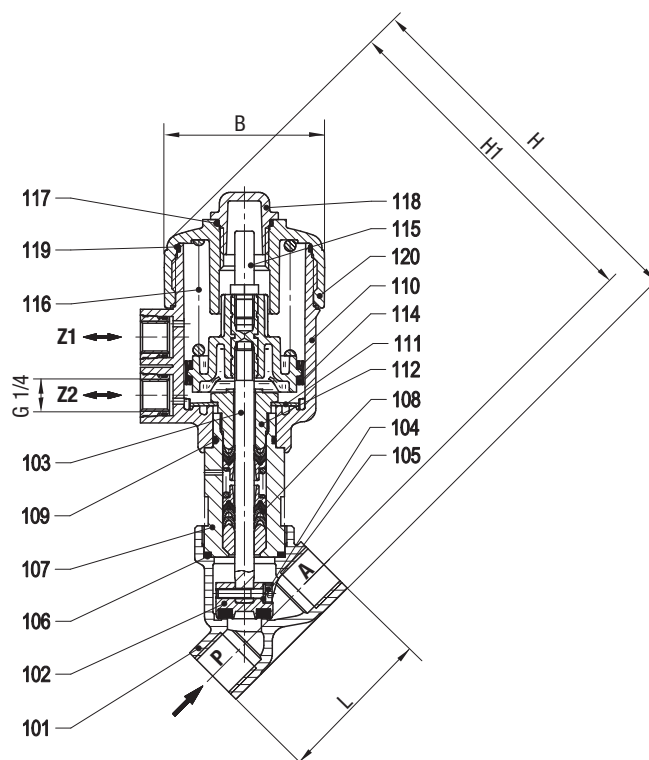
www.norgren.com/info/en3-268

DIMENSIONS

Index	Description
101	Valve body
*102	Valve plate
103	Valve spindle assembly
104	Allen head screw
105	Spring washer
*106	Gasket
107	Screw piece
*108	Spindle sealing
*109	O-ring
110	Bottom of control head housing
*111	Cup spring
112	Screw piece
*113	Pressure spring
*114	Piston seal
115	Signal pin
*116	Pressure spring
*117	O-ring
118	End cap
*119	O-ring
120	Control head housing cover

* A service kit consists of these individual parts

Port size	L mm	B* mm	H mm	H1 mm
G1/2	65	66	154	140,5
G3/4	75	66	160	144,5
G1	90	66	171	150,5



Service kits

For valves	MODELS
8474200	1260581
8274300	1260583
8274400	1260585

Further options (valves)

XXXXX08.XXXX Double acting; 4/2 or 5/2-way pilot valve required

Further options on request

Seal materials: NBR, FPM, EPDM

Stroke limiter

Silencer

Accessories

3/2-way pilot valve 84660 / 84680 (page 3-270)

Note:

Order service kit 1264287 if these valves are to be used in Zone 1/2 or 21/22 hazardous areas. This kit includes an additional instruction plate, a declaration of conformity and a dust filter. The maximum permissible fluid temperature is reduced to +85°C.