

84190
2/2 way valves (pilot actuated)
1/8" ... 1/2"

Small size drain or shut-off valve
Compact miniature actuator Ø 30 mm
Suitable for contaminated process fluids
Actuator may be rotated 360°
Suitable for vacuum up to max. 90%
Stainless steel body
Wide temperature range
Shock and vibration tested to EN 61373,
Category 1, class A and B



Technical features

Medium:
Neutral gases and liquids
Operation:
Remote pilot operated
Mounting:
Internal threads
Port size:
G1/8 ... G1/2 or
1/8 NPT ... 1/2 NPT

Pilot port:
M5
Operating pressure:
0 ... 25 bar (0 ... 363 psi)
Pilot pressure:
4 ... 10 bar (58 ... 145 psi)

Fluid temperature:
-10 ... +90°C (14 ... 194°F)
Ambient temperature:
-10 ... +60°C (14 ... 140°F)
Storage temperature:
-40°C (-40°F)
Air supply must be dry enough
to avoid ice formation at
temperatures below +2°C (+35°F).

Materials
Body: stainless steel
Seat seal: PTFE

Technical data

2/2 way normally closed valves

Symbol	Size	Flow kv value (m³/h)	Operating pressure (bar)	Pilot pressure (bar)	Weight (kg)	Model Body material Stainless steel
	G1/8	0,12	0 ... 25	4 ... 10	0,34	8419800.0000.00000
	1/8 NPT	0,12	0 ... 25	4 ... 10	0,34	8439800.0000.00000
	G1/4	0,35	0 ... 25	4 ... 10	0,32	8419020.0000.00000
	1/4 NPT	0,35	0 ... 25	4 ... 10	0,32	8439020.0000.00000
	G3/8	0,60	0 ... 20	4 ... 10	0,32	8419140.0000.00000
	3/8 NPT	0,60	0 ... 20	4 ... 10	0,32	8439140.0000.00000
	G1/2	1,80	0 ... 8	4 ... 10	0,46	8419260.0000.00000
	1/2 NPT	1,80	0 ... 8	4 ... 10	0,46	8439260.0000.00000

Option selector

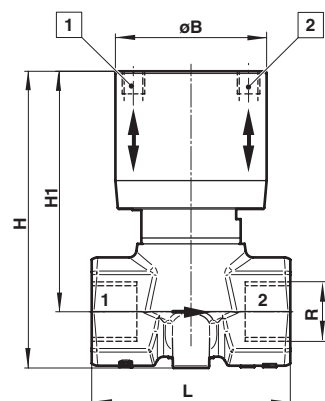
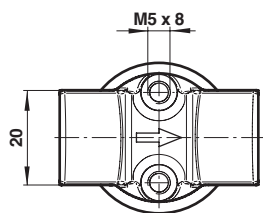
84★★★★.0000.00000

Material/thread	Substitute
ISO G parallel	19
NPT	39
Port size	Substitute
1/8"	8
1/4"	0
3/8"	1
1/2"	2

Orifice	Substitute
2 mm	00
4 mm	20
6 mm	40
10 mm	60

Basic dimensions

Dimensions shown in mm
Projection/First angle



1 Pilot port (normally closed) M5

2 Exhaust port (normally open) M5

Supply port (R)	Orifice	Ø B	H	H1	L	Model
G1/4	2	33	65	53	44	8419800.0000.00000
1/8 NPT	2	33	65	53	44	8439800.0000.00000
G1/4	4	33	65	53	44	8419020.0000.00000
1/4 NPT	4	33	65	53	44	8439020.0000.00000
G3/8	6	33	65	53	44	8419140.0000.00000
3/8 NPT	6	33	65	53	44	8439140.0000.00000
G1/2	10	33	81	67	60	8419260.0000.00000
1/2 NPT	10	33	81	67	60	8439260.0000.00000

Warning

These products are intended for use in industrial compressed air and rail transport systems only. Do not use these products where pressures and temperatures can exceed those listed under 'Technical features'.

Before using these products with fluids other than those specified, for non-industrial applications, life-support systems, or other applications not within published specifications, consult NORGREN.

Through misuse, age, or malfunction, components used in fluid power systems can fail in various modes.

The system designer is warned to consider the failure modes of all component parts used in fluid power systems and to provide adequate safeguards to prevent personal injury or damage to equipment in the event of such failure.

System designers must provide a warning to end users in the system instructional manual if protection against a failure mode cannot be adequately provided.

System designers and end users are cautioned to review specific warnings found in instruction sheets packed and shipped with these products.