

- Protect compressed air systems from over-pressurisation
- Can be installed at any point in the compressed air system without regard to accessibility. The pilot regulator can be installed in the most convenient location<sup>†</sup>
- High relief capacity
- Suitable for use in systems with large air flow requirements

<sup>†</sup>For piping and installation details, see page 8.6.161.01.

### Technical Data

Medium:

Compressed air only

Operating Temperature:

-20°C\* to +80°C

\*Consult our Technical Service for use below +2°C

Recommended Operating Pressure<sup>††</sup>:

0,14 - 16 bar

<sup>††</sup>May be restricted by piloting regulator or controlled air supply.

Gauge Port:

G<sup>1</sup>/<sub>8</sub>

Pilot Port:

R<sub>C</sub> 1/4

**Note:** Use of this unit outside of its recommended operating pressure range could lead to product malfunction and should not be attempted.

### Pilot Regulators

R38 Precision control of pressures from 0,3 bar  
11,400 / 20AL-X Normal applications (constant bleed)

### Materials

Zinc alloy body. Aluminium alloy bonnet. Synthetic rubber elastomeric materials.

### Ordering Information

To order a standard Pilot Operated Relief Valve, quote model number from table overleaf.

For non-standard models please consult our Technical Service.

## Pilot Operated Relief Valve G<sup>3</sup>/<sub>4</sub>, G1



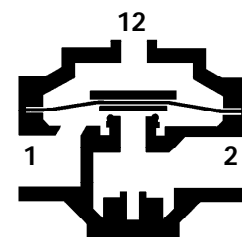
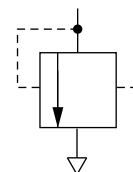
### Port Sizes

G<sup>3</sup>/<sub>4</sub>, G1 to ISO 1179

Accepts ISO 228 (BS 2779) parallel or ISO 7 (BS 21) taper connectors

### Alternative Models

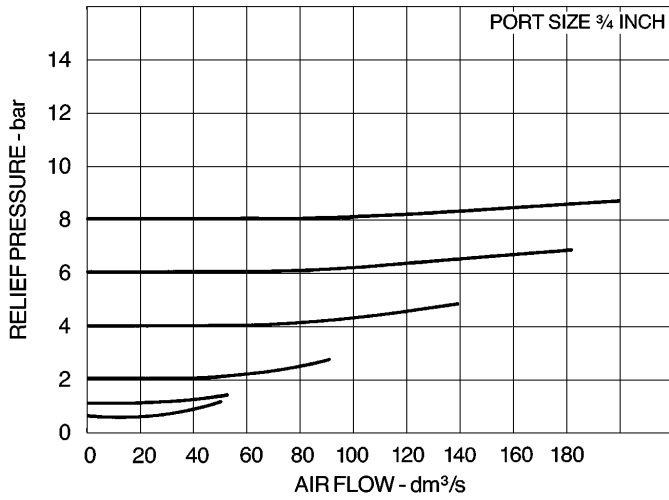
Other port thread forms





## Typical Performance Characteristics

### RELIEF FLOW CHARACTERISTICS



### Standard Pilot Operated Relief Valves

Port Size	Model	Weight kg
G <sup>3</sup> / <sub>4</sub>	40AC-6	1,60
G1	40AC-8	1,55

### Non-standard Models

For other options, please consult our Technical Service.

### Accessories

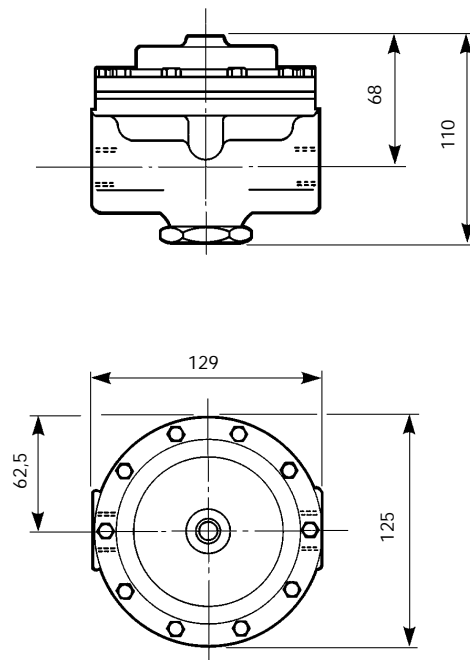
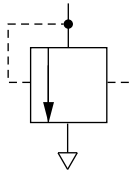
Wall Mounting Bracket Kit, see page 8.9.061.03.

Pressure Gauges, see page 8.11.031.01. (Pressure Gauges should always be connected to the main regulator, not the pilot regulator).



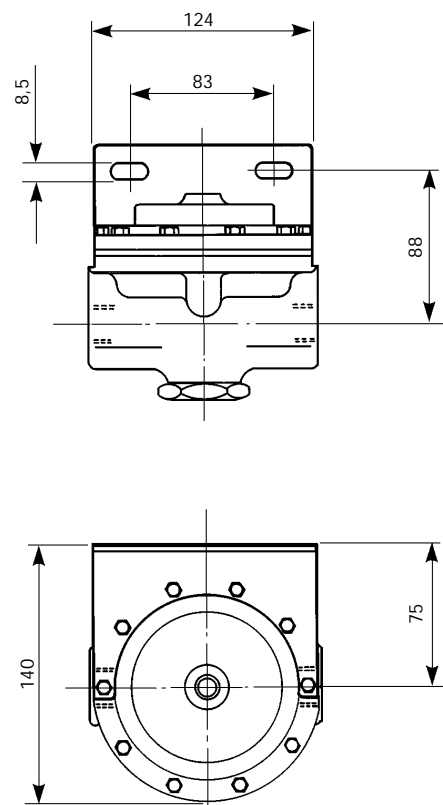
## Pilot Operated Relief Valve

40AC-6 G<sup>3/4</sup>  
40AC-8 G1



## Bracket Mounting

Bracket Kit reference:  
18-001-029





## Spares Kits

Type	Gasket Kit	Repair Kit
All models	62AX-8-GK	40AC-100

---

## Warning

These products are intended for use in industrial compressed air systems only. Do not use these products where *pressures* and *temperatures* can exceed those listed under 'Technical Data'.

Before using these products with fluids other than those specified, for non-industrial applications, life-support systems, or other applications not within published specifications, consult NORGREN MARTONAIR.

Through misuse, age, or malfunction, components used in fluid power systems can fail in various modes. The system designer is warned to consider the failure modes of all component parts used in fluid power systems and to provide adequate safeguards to prevent personal injury or damage to equipment in the event of such failure.

**System designers must provide a warning to end users in the system instructional manual if protection against a failure mode cannot be adequately provided.**

System designers and end users are cautioned to review specific warnings found in instruction sheets packed and shipped with these products.