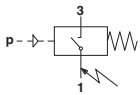


Electro-mechanical pneumatic pressure switches

Mini series

2 ... 6,2 bar (rising pressure, non-adjustable)



Very small construction
Screw-in type
AMP E-terminals 2,8 x 0,8

TECHNICAL DATA

Medium:
Lubricated air, oil and other neutral lubricated fluids

Mounting position:
Optional

Ambient temperature:
-10 ... + 60 °C

Fluid temperature:
0 ... + 80 °C

Consult our Technical Service for use below +2°C.

Switching element:
Switch - non adjustable

Switching pressure difference/hysteresis:
Fixed

Degree of protection:
IP 00

Vibration:
Max. 4 g (sinusoidal)

MATERIALS

Housing: steel
Seal: plastic piston

General information

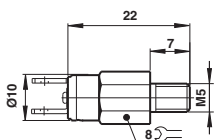
Pressure range (bar)	Switching range falling pressure p_{vu} (bar)	Rising pressure p_{vo} (bar)	Max. pressure (bar)	Switching cycles (1/min)	Materials		Process connection external thread	Weight (kg)	MODELS
					Housing	Seal			
0 ... 10	1,5 ... 2,5	2,0 ... 3,5	20	20	1.4104 (Perbunan)	NBR/Delrin	M 5	0,004	9950501
0 ... 10	2,5 ... 3,7	3,0 ... 5	20	20	1.4104 (Perbunan)	NBR/Delrin	M 5	0,004	9950502
0 ... 10	3,5 ... 5,1	4,7 ... 6,2	20	20	1.4104 (Perbunan)	NBR/Delrin	M 5	0,004	9950509

Above values at 20 cycles minute and 30°C

Capacity

Type of current	Load	I max. (A)	Voltage (V)	U min (W/VA)	Contact life
a.c.	Inductive $\cos \varphi \approx 0,7$	0,75	24	18	20.000
d.c.	Inductive $\cos \varphi \approx 0,7$	0,5	24	12	20.000

DIMENSIONS



For further information



www.norgren.com/info/en5-036