

- Protect compressed air systems from over-pressurisation
- Simple, low cost units
- 'Pop' type operation
- Suitable for direct connection to pressure vessels and associated components
- Plunger rod for testing valve (1002 models only)

#### Technical Data

Medium:

Compressed air only

Operating Temperature:

−40°C\* to +230°C type 1002

−20°C\* to +80°C types 61A2, 61B2

\*Consult our Technical Service for use below +2°C

Recommended Operating Pressures-type 1002:

2 - 6,3 bar standard

0,14 - 1,6 bar optional

1,6 - 2,5 bar optional

6,3 - 14 bar optional

Recommended Regulated Pressures-type 61A2, 61B2:

5 - 10 bar standard

0,63 - 1,6 bar optional

1,6 - 4 bar optional

2,5 - 5 bar optional

10 - 16 bar optional

Accuracy Limitation:

±20% of relief setting

**Note:** Use of this unit outside of its recommended operating pressure range could lead to product malfunction and should not be attempted.

#### Materials

Type 1002:

Brass body and adjusting cap. Stainless Steel Ball seal.

Type 61A2, 61B2:

Brass body and adjusting cap. Polyurethane seal.

#### Ordering Information

To order a standard 'Pop' Type Relief Valve, quote model number from table overleaf.

For non-standard models please consult our Technical Service.

#### 'Pop' Type Relief Valve R $\frac{1}{4}$ , $\frac{1}{4}$ N.P.T.



#### Connection

R $\frac{1}{4}$  Types 1002, 61B2

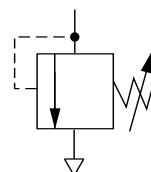
$\frac{1}{4}$  N.P.T. Type 61A2

#### Alternative Models

Pre-set relief pressure

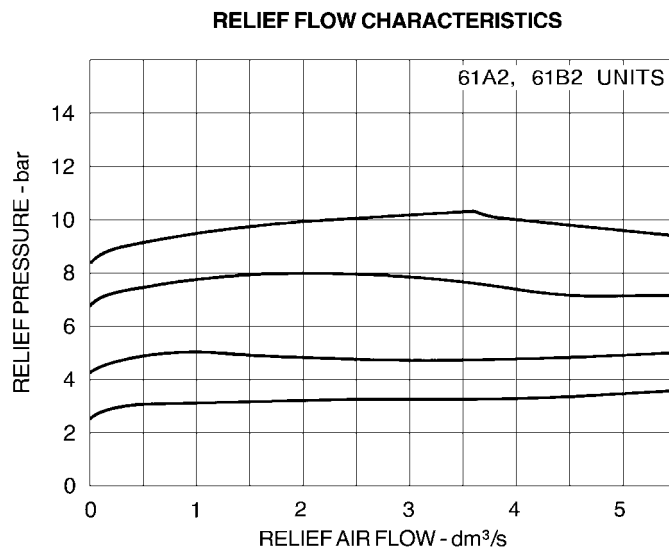
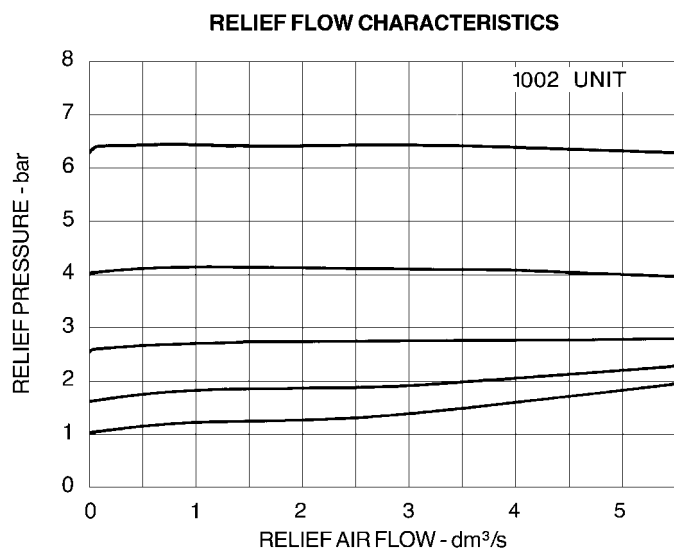
Nickel plate finish (61A2, 61B2 only)

Ring pull (1002 only)





## Typical Performance Characteristics



## Standard 'Pop' Type Relief Valves

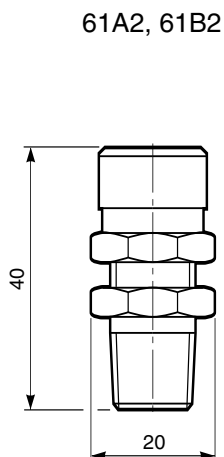
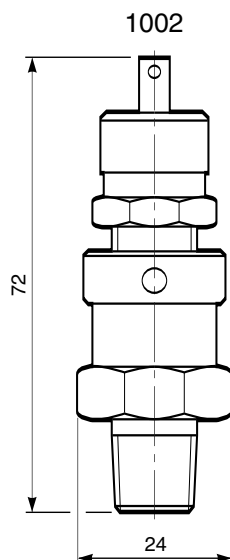
Port Size	Model	Weight kg
R <sup>1</sup> / <sub>4</sub>	1002	0,110
1/4 N.P.T.	61A2	0,049
R <sup>1</sup> / <sub>4</sub>	61B2	0,051

If a pressure range is not specified, a standard range unit will be supplied, i.e. 5 - 10 bar for 61A2/61B2 or 2 - 6,3 bar for 1002.

## Non-standard Models

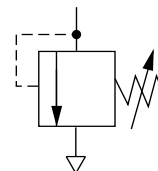
For non-standard pressure range models, pre-set relief pressure models or type 1002 models complete with ring pull, please specify.

For other options, please consult out Technical Service.



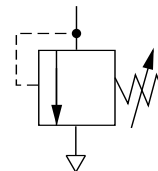
### 6,3 bar spring

1002 R<sup>1</sup>/<sub>4</sub>



### 10 bar spring

61A2 1/4 N.P.T.  
61B2 R<sup>1</sup>/<sub>4</sub>



## Warning

These products are intended for use in industrial compressed air systems only. Do not use these products where *pressures* and *temperatures* can exceed those listed under 'Technical Data'.

Before using these products with fluids other than those specified, for non-industrial applications, life-support systems, or other applications not within published specifications, consult NORGREN MARTONAIR.

Through misuse, age, or malfunction, components used in fluid power systems can fail in various modes. The system designer is warned to consider the failure modes of all component parts used in fluid power systems and to provide adequate safeguards to prevent personal injury or damage to equipment in the event of such failure.

**System designers must provide a warning to end users in the system instructional manual if protection against a failure mode cannot be adequately provided.**

System designers and end users are cautioned to review specific warnings found in instruction sheets packed and shipped with these products.