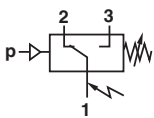


Electro-mechanical allfluid pressure switch

ATEX certified
20D Allfluid -1 ... 63 bar
G1/2 (male)



Switching function:
 Microswitch SPDT
 (commutator)

Terminals 1 - 3:
 Contacts close on
 rising pressure

Terminals 1 - 2:
 Contacts open on
 rising pressure

For Ex zones 1 and 2 (gases) as well as Ex zones 21 and 22 (dusts) category II2G, type of protection EEx de IIC T6

Microswitch with gold plated contacts

Electrical connection: connector M20 x 1,5

Robust metal housing in weather-resisting version

TECHNICAL DATA

Medium:

For neutral, non-inflammable gases and fluids

Operation:

Softseal piston, stainless steel bellow

Temperature:

Fluid/Ambient:

-10 ... +75°C

Please contact our technical service for use below +2°C

Switching pressure difference/hysteresis:

Fixed - option

Adjustable - option

Repeatability:

±1% of full scale

(depending on regulating pressure)

Microswitch

With gold plated contacts

Degree of protection (conforming to DIN 40050):

IP65

Mounting position:

Optional

Resistance to shock and vibration (avoid if possible):

4 g max. (sinusoidal) / 5 Hz max.

Sealing:

≤10⁻⁷ mbar • l • s⁻¹

Pulsations:

Not permitted

Switching cycles:

20/min. max.

MATERIALS

Housing: aluminium diecast

Sensor: stainless steel

Sealing: stainless steel-bellows

20D Allfluid ATEX - fixed switching pressure difference

Operating pressure range ^{*1)} [bar]	Over pressure ^{*2)} [bar]	Switching pressure difference typical value		Pressure sensor material	Sensor	Fluid port (male)	MODELS
		Lower range [bar]	Upper range [bar]				
-1 ... 0	10	0,20	0,23	1.4404	B	G 1/2	184 01 15
-1 ... 1	10	0,20	0,25	1.4404	B	G 1/2	184 02 15
-1 ... 2,5	10	0,22	0,26	1.4404	B	G 1/2	184 04 15
0,05 ... 1	10	0,16	0,18	1.4404	B	G 1/2	184 11 15
0 ... 1,6	10	0,16	0,20	1.4404	B	G 1/2	184 12 15
0,5 ... 4	20	0,50	0,55	1.4404	B	G 1/2	184 14 15
0,5 ... 6	20	0,60	0,70	1.4404	B	G 1/2	184 15 15
0,5 ... 10	20	0,70	0,90	1.4404	B	G 1/2	184 16 15
1 ... 16	50	1,00	1,40	1.4404	F	G 1/2	184 17 15
1 ... 25	50	1,30	1,80	1.4404	F	G 1/2	184 18 15
5 ... 63	150	2,00	5,00	1.4404	H	G 1/2	184 19 15

^{*1)} Atmospheric air pressure.

^{*2)} Short term pressure peaks should not exceed this value. Normal operation should be within switching pressure range. Over pressure equals maximum test pressure.

20D Allfluid ATEX - adjustable switching pressure difference

Operating pressure range * ¹⁾ (bar)	Over pressure * ²⁾ (bar)	Switching pressure difference typical value			Pressure sensor material	Sensor	Fluid port (male)	MODELS
		Lower range (bar)	Upper range Min. (bar)	Max. (bar)				
-1 ... 0	10	0,19	0,25	0,80	1.4404	B	G1/2	185 01 15
-1 ... 1	10	0,20	0,30	1,00	1.4404	B	G1/2	185 02 15
-1 ... 2,5	10	0,20	0,28	2,50	1.4404	B	G1/2	185 04 15
0,05 ... 1	10	0,16	0,18	0,80	1.4404	B	G1/2	185 11 15
0 ... 1,6	10	0,10	0,16	1,00	1.4404	B	G1/2	185 12 15
0,1 ... 2,5	10	0,18	0,22	2,00	1.4404	B	G1/2	185 13 15
0,5 ... 4	20	0,50	0,60	2,50	1.4404	B	G1/2	185 14 15
0,5 ... 6	20	0,60	0,70	5,00	1.4404	B	G1/2	185 15 15
0,5 ... 10	20	0,70	0,90	8,00	1.4404	B	G1/2	185 16 15
1 ... 16	50	1,60	1,90	12,00	1.4404	F	G1/2	185 17 15
1 ... 25	50	1,60	2,20	20,00	1.4404	F	G1/2	185 18 15
5 ... 63	150	2,00	5,00	20,00	1.4404	H	G1/2	185 19 15

*¹⁾ Atmospheric air pressure.

*²⁾ Short term pressure peaks should not exceed this value. Normal operation should be within switching pressure range. Over pressure equals maximum test pressure.

ACCESSORIES

Brackets



0574772 (steel)
0553908 (stainless steel)
0551894 (stainless steel G1/2)

Surge damper



0553258 (stainless steel G1/4)
0574773 (brass/steel) G1/4)

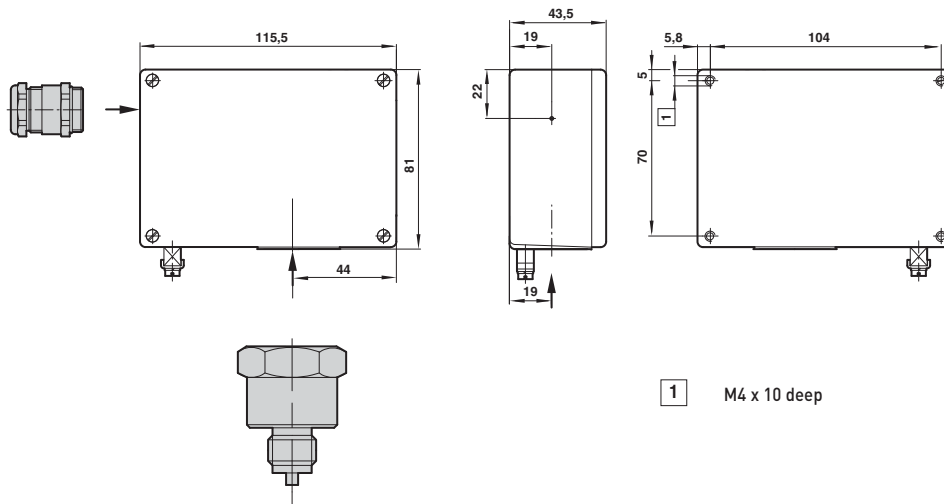
Pressure port – reducing nipple



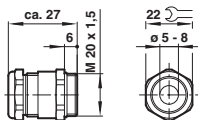
0553831 (G1/2 – 1/2 NPT)
0550083 (G1/4 – G1/2)
0574764 (G1/4 – G3/8)
0574765 (G1/4 – 1/4 NPT)

Switching capacity, spark quenching / intrinsically safe with d.c. voltage, see standard 20D of page 5-017

BASIC DIMENSIONS



Electrical connector M20 x 1,5
conforming to EEx e (ATEX),
Nickel plated brass for cable Ø 5 ... 8 mm (Model: 0588819)



Electro-mechanical allfluid pressure switch ATEX certified

20D Allfluid -1 ... 63 bar
G1/2 (male)

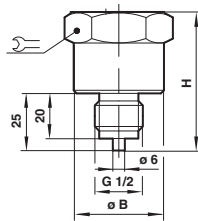
Sensor combinations

Operating pressure range Code	Sensor type
01	B
02	B
04	B
11	B
12	B
13	B
14	B
15	B
16	B
17	F
18	F
19	H

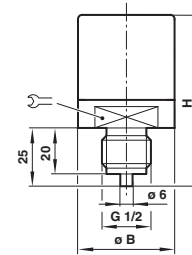
Sensor dimensions

Sensor type	H	B	Ø
B	75	42	32
F	37	32	41
H	53	37	32

Sensor type
F+H



Sensor type
B



ACCESSORIES

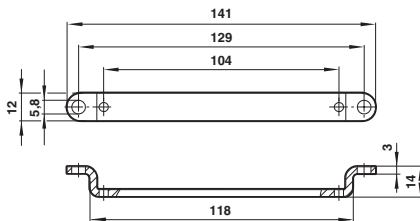
Brackets (2 brackets and 4 screws)

Steel

Model: 0574772

Stainless steel 1.4301 (AISI 304)

Model: 0553908



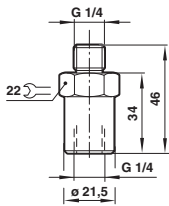
Surge damper

Stainless steel 1.4301 (AISI 304)

Model: 0553258

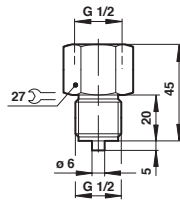
Brass/steel

Model: 0574773



Stainless steel 1.4301 (AISI 304)

Model: 0551894



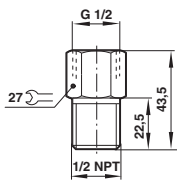
Pressure port/Reducing nipple

G1/2 I ... G1/2 NPT A

Stainless steel 1.4305

(AISI 303/304 S)

Model: 0553831

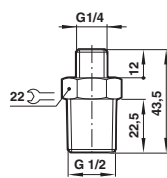


G1/4 A ... G1/2 A

Stainless steel 1.4305

(AISI 303/304 S)

Model: 0550083



G1/4 A ... 1/4 NPT

Brass

Model: 0574765

